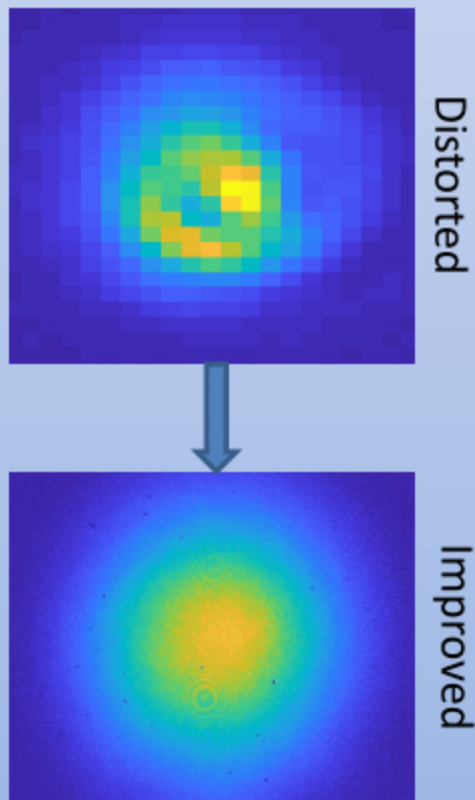


# Characterization and optimization of a Ti:Sapphire laser beam profile

This project aims at the optimization of the spatial properties of ultrashort laser pulses generated in a Ti:Sapphire laser system. Applying a recently proposed simple experimental approach we intend to set up a novel type of spatial filter for improving the wave front of the laser pulses. The Bachelor work includes a careful characterization of the current and - after installation of the new spatial filter - the resulting wave fronts. Simulations also may be included into this project.



Interesse?

Prof. Markus Drescher  
[markus.drescher@desy.de](mailto:markus.drescher@desy.de)

Mark Prandolini  
[mark.prandolini@desy.de](mailto:mark.prandolini@desy.de)